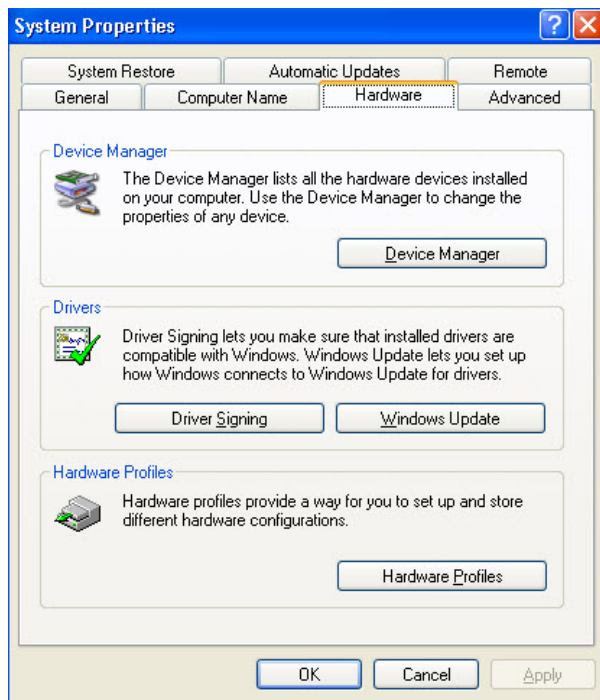
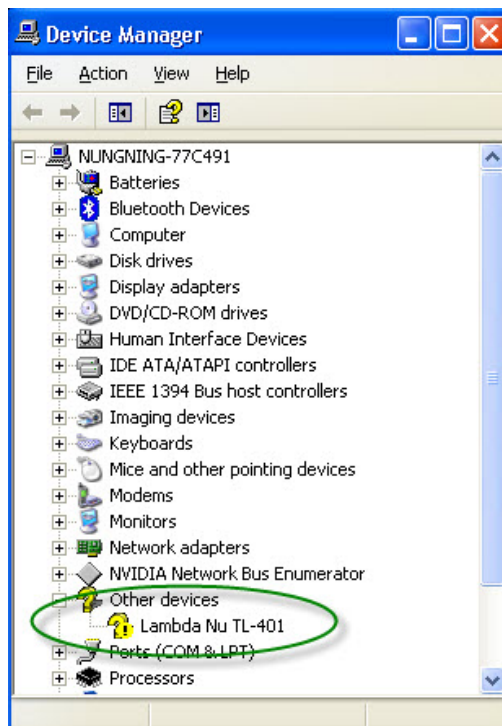


How to install driver

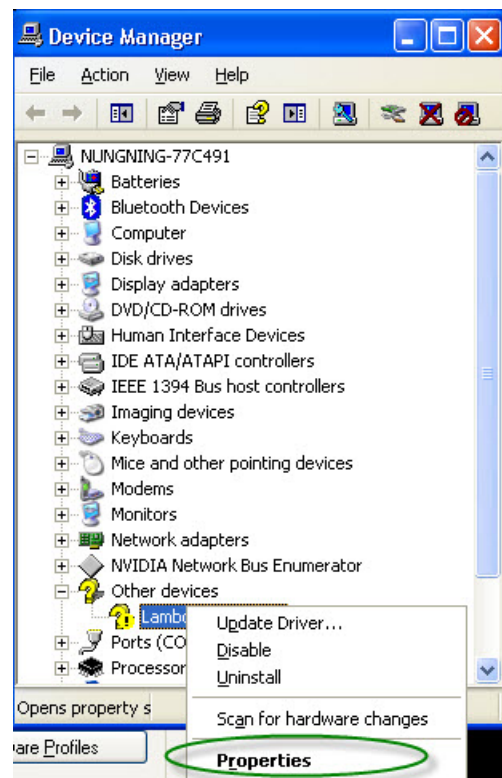
1. Right click on My computer icon. Click on Device Manager
Connect TL-401 USB to PC via USB



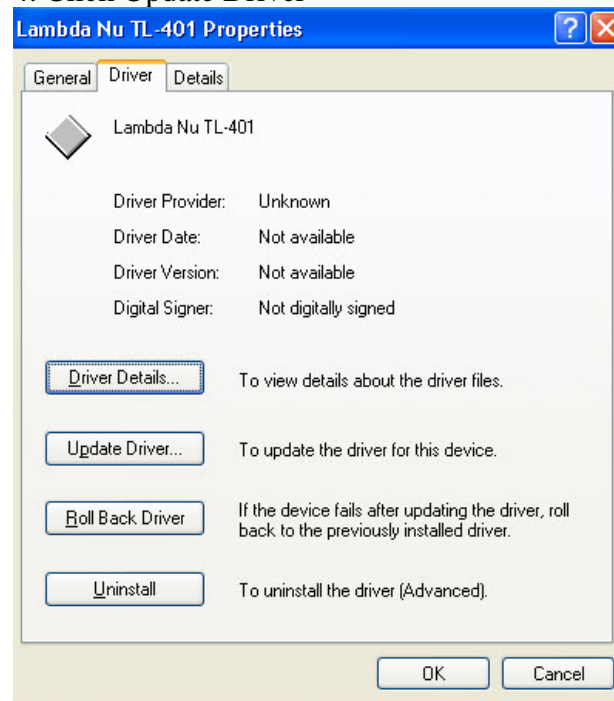
2. You will see that PC can detect this board as follow image



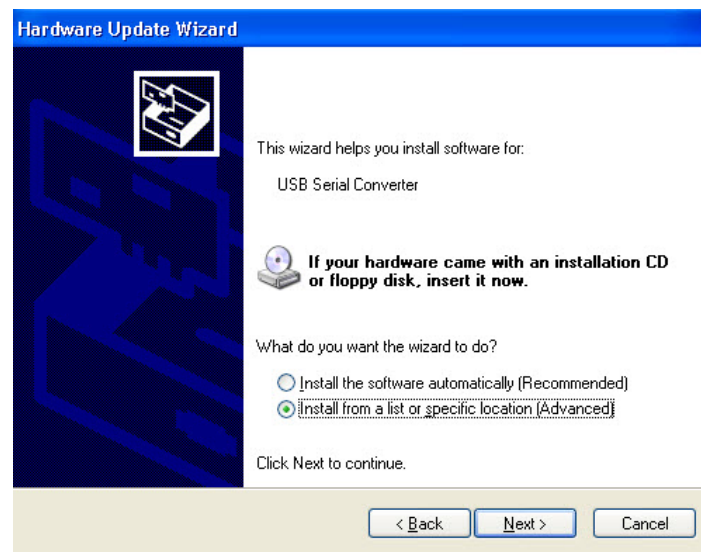
3. Right click on Lambda Nu TL-401, click Properties to update Driver



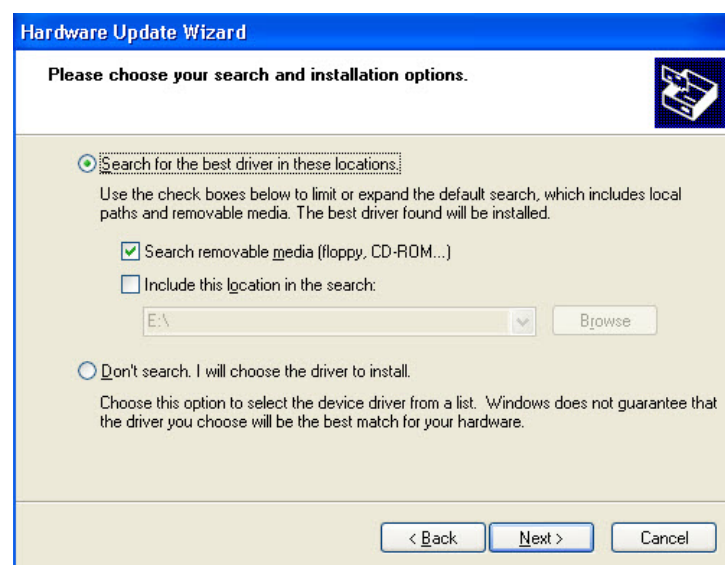
4. Click Update Driver



5. Select Install from a list as below image, click Next



6. Check Box at Including the location in the search. Browse to the location of Driver



The schematic

4-Channel Standalone USB Temperature Logger

